





Reli-e-Marg is a young innovative and integrated information technology company, offering end-to-end solutions in niche verticals with a clientele including US Fortune 500 firms.

---

We are ISO 9001:2008 certified for Quality Management Systems, and are a NASSCOM and STPI member.

---



We are an empanelled GIS Service Provider (ITIA-GSP) for the R-APDRP program by the Ministry of Power, Govt. of India, in the Indian Power Sector.

---

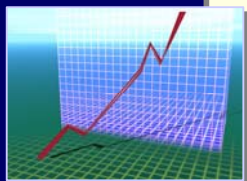
We deliver our products to the market as an Application Service Provider in co-operation with consulting companies, business portals, Internet companies and/or traditional software packaging via Enterprise Software companies.

---



We at Reli-e-Marg recognize that complicated problems often require solutions uniting the strengths of several disciplines.

Our skill at integrating multiple technologies into seamless solutions by utilizing the unique skillsets of our in-house personnel and strategic alliances with our partners allows us to offer our customers the state-of-the-art at the best possible value.



Our innovative technological approaches enable our clients to improve quality, heighten productivity and maintain their competitive advantage.

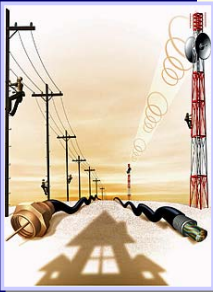


Reli-e-Marg has proven expertise in building and delivering leading object-oriented, distributed, n-tiered, scalable, web-enabled technologies for diverse industrial verticals. These applications have real-time messaging capabilities and use state-of-the-art technologies. Relevant de facto standards compliance is built into several mission-critical applications.

---

Our market focus and expertise areas are web applications for Internet/Intranet in the following verticals:

- ✓ **eCommerce**: ERP/CRM, Employee Performance Manager/ Appraisals/ Survey etc.
  - ✓ **Healthcare IT**: HIS/RIS/PACS/EHR/Patient Portal based on HL7/DICOM/ISO/IHE standards
  - ✓ **Transport**: Fleet Management, Automatic Vehicle Tracking and Logistics IT using CAD/DGPS/GIS/GPRS technologies
  - ✓ **Utilities (Gas, Water, Power)** : Grid/Network/ Customer Management using CAD/DGPS/GIS/GPRS technologies
  - ✓ **SAN/NAS**: Storage management applications
  - ✓ **Automobile IT**: Automated solutions for Vehicle Sales, Garage management etc.
- 



We use proven tools and emerging sophisticated methodologies to improve productivity like UML/ RUP/ RAD and Proactive testing.



Our project management is metrics-driven, and includes Binary Quality gates, Configuration management and People-aware management accountability practices.

Our integrated service suite encompasses a full range of Consultancy Services and Customer Support & Maintenance services.

---



The Spectrum of our Software Consultancy Services include:

- ✓ Project/product Analysis and Design
  - ✓ Project management and planning
  - ✓ Specification, Development, Implementation
  - ✓ Re-engineering and Porting
  - ✓ Quality assurance and Testing
- 

Our Service offerings help our customers enhance ROI on their software products by significantly increasing response times while optimizing on maintenance costs. These include:

- ✓ Installation and Warranty
  - ✓ Customer Support and Maintenance
  - ✓ Training
- 

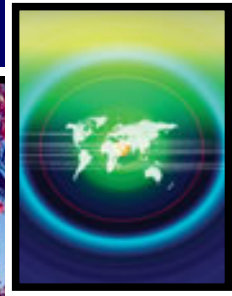
Our pricing is competitive and comprehensive, providing more value for money than in the West, to enable our customers to get more out of their software budget. We offer Flexible business models:

- ✓ Fixed Costs/Project time and Material
  - ✓ Virtual Lab – offshore outsourcing development and maintenance (ODC)
- 



**Join hands with Reli-e-Marg and ensure mutual success!**





## Reli-e-Marg Software Consultants Pvt. Ltd.

I/SMT, 2<sup>nd</sup> Floor, Samrat & Gagana Complex,  
Udayaravi Road, Kuvempunagar,  
Mysore, - 570023, Karnataka, India

---

Tel: +91-821-2460907  
Fax: +91-821-2460901  
E-mail: [info@reliemarg.com](mailto:info@reliemarg.com)  
Web: [www.reliemarg.com](http://www.reliemarg.com)